



**RAFAL TOPOLEWSKI**

**ARTISSIMA | New Entries | Booth 2 Fuxia**

**1 – 3 NOVEMBER, 2024**

**OVAL Lingotto Fiere**

**via Giacomo Mattè Trucco, 70**

**Torino, Italy**

Alice Amati is pleased to present a solo booth by Polish and Lisbon-based artist Rafal Topolewski in the New Entry section of Artissima. This will mark the artist's first solo presentation in Italy and his debut at Artissima.

The gallery's booth at Artissima draws inspiration from the theme of the 2024 edition of the fair – *The Era of Daydreaming*. Rafal Topolewski's intimate, small-scale paintings seem to inhabit a realm of semi-consciousness, evocative of the elusive state one drifts into while daydreaming.

In the artist's practice, personal memories and dreams merge together resulting in paintings which stem from the liminal mental state between sleeping and waking. As such, depictions of faces share a vacant expression, suggestive of a mind not wholly present, and objects are superimposed over one another, in an out-of-joint logic. The combination of awkwardly cropped fragments and the juxtaposition of contrasting symbolic elements reproduces something of the uncanny way things get mixed up in the hallucinatory quality of dreams. In this suggestible state, the artist's work invites viewers to immerse themselves in an uncanny space where logic and reason give way to intuition and emotion. The frequent inclusion of the artist's own portrait suggests Topolewski's interest in interrogating his own psyche as he picks at the seams of our collective consciousness.

---

## **ABOUT THE ARTIST**

**Rafal Topolewski** (b.1983 Grudziadz, Poland) lives and works in Lisbon. He studied Fine Art at the Royal Academy Schools (London, UK) and at the Manchester Metropolitan University. Recent exhibitions include: 'Self-Portraits', GRIMM, New York (2024); 'Slumber', GRIMM, Amsterdam (2024); 'Interludes', Alice Amati, London (2023); 'The Belly and the Guts', Alice Amati, London (2023); 'In Three-Acts', Huxley-Parlour, London (2023); 'Becoming Creature', Tabula Rasa Gallery, London (2023); 'Castelet', Simo Bacar, Lisbon (2022); 'Corpo e Mente', curated by Lawrence Van Hagen, Palazzo Barbaro, Venice (2022); 'If Not, Winter', Simo Bacar, Lisbon (2022); 'Nudes and Dudes', Lundgren Gallery, Mallorca (2020), 'Isle, Lewis Hammond and Rafal Topolewski', Smart Objects, Los Angeles (2018); 'Terraforms', The Concept Space, London (2018); 'Adolf Menzel's Foot', PS Mirabel, Manchester (2017); 'Fully Awake', Blip Blip Blip, Leeds (2017); 'Royal Academy Show', Royal Academy Schools, London (2016); 'Premiums', Royal Academy of Arts, London (2015) amongst others.

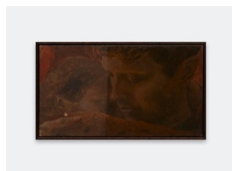


## **ABOUT THE GALLERY**

Alice Amati is a contemporary art gallery established in Fitzrovia in June 2023. The gallery is committed to fostering artists at the early stages of their career by often providing the opportunity for their first solo show in the city and a supportive context for artistic explorations and career development. Concerned with encouraging transnational dialogues around topical questions within society and art, Alice Amati brings together British and International artists through a challenging, experimental and rigorous exhibitions programme. Joining a cohort of young and established galleries in the burgeoning artistic scene of Fitzrovia, Alice Amati operates as a platform for new voices in the contemporary global artistic scene with a strong commitment to research, collaboration and diverse practices.

For more information, sales enquiries, interview and image requests please contact: [info@aliceamati.com](mailto:info@aliceamati.com).

## Works checklist | Rafal Topolewski | Artissima



**Rafal Topolewski**

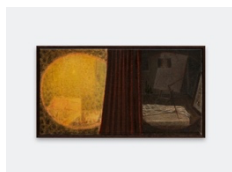
*Between*, 2024

Oil on linen

28.3 x 49.3 cm | 11 1/8 x 19 3/8 in

29.5 x 50.5 cm | 11 5/8 x 19 7/8 in (Framed)

(RT035)



**Rafal Topolewski**

*Split*, 2024

Oil on linen

15.5 x 28 cm | 6 1/8 x 11 in

16.7 x 29.2 cm | 6 5/8 x 11 1/2 in (Framed)

(RT034)



**Rafal Topolewski**

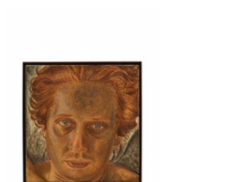
*Disperse II*, 2024

Oil on linen

7 1/8 x 12 1/4 in | 18.2 x 31.2 cm

Framed: 7 5/8 x 12 3/4 in | 19.5 x 32.5 cm

(RT033)



**Rafal Topolewski**

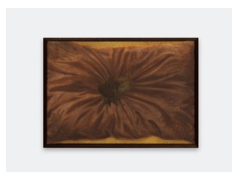
*5:30*, 2024

Oil on linen

11 7/8 x 11 3/8 in | 30.3 x 29 cm

Framed: 12 1/2 x 11 7/8 in | 31.8 x 30.3 cm

(RT032)



**Rafal Topolewski**

*Load*, 2024

Oil on linen

12 1/8 x 17 in | 30.7 x 43.2 cm

Framed: 12 7/8 x 17 7/8 in | 32.8 x 45.5 cm

(RT031)



**Rafal Topolewski**

*Recollection*, 2024

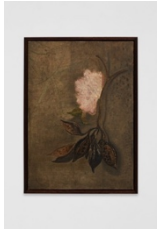
Oil on linen

13 x 8 3/4 in | 33 x 22.2 cm

Framed: 13 5/8 x 9 1/4 in | 34.5 x 23.6 cm

(RT030)

# ALICE AMATI



**Rafal Topolewski**

Untitled, 2024

Oil on linen

17 x 12 in | 43.3 x 30.5 cm

Framed: 17 7/8 x 12 7/8 in | 45.4 x 32.8 cm

(RT029)



**Rafal Topolewski**

*Dive*, 2024

Oil on linen

13 3/4 x 15 in | 35 x 38 cm

Framed: 10 3/8 x 15 1/2 in | 26.4 x 39.5 cm

(RT028)